

MCS7840

USB2.0 to Four High Speed Serial Ports

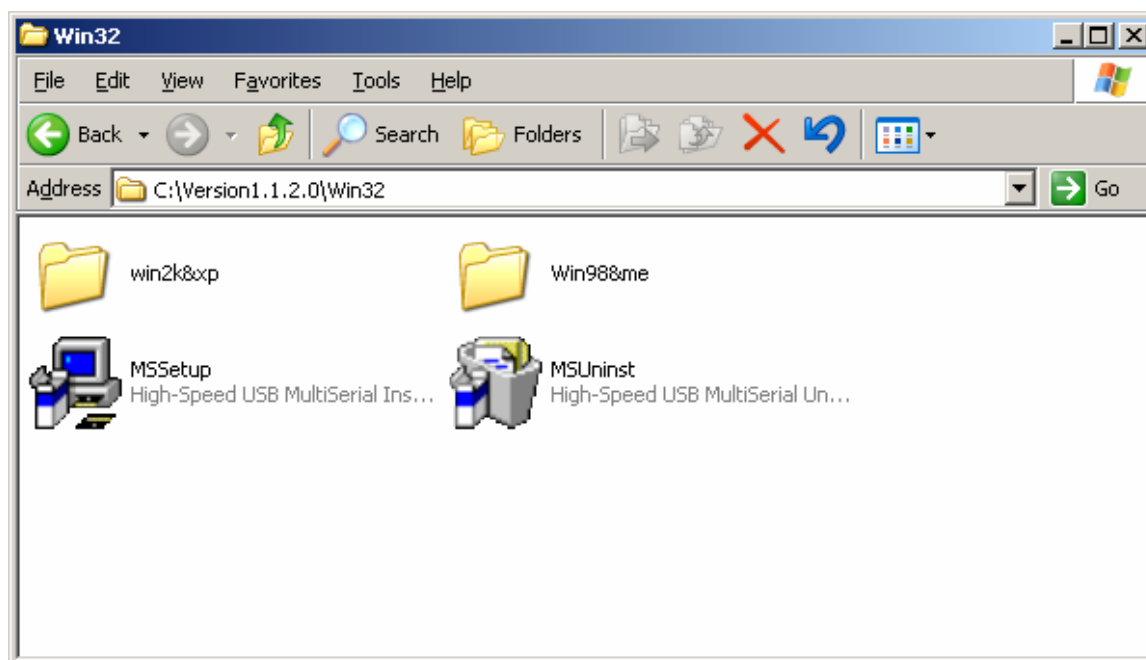
User Manual

For Windows XP / 2000

Contents	Page
1. Installation	3
2. MCS7840 Device Detection	5
3. Un-Installation	11
4. Installation / Detection / Un-Installation of MCS7840 on Win 2000 OS	14
5. About MCS7820	14
6. Support	14
7. Revision history	14

1. Driver Installation

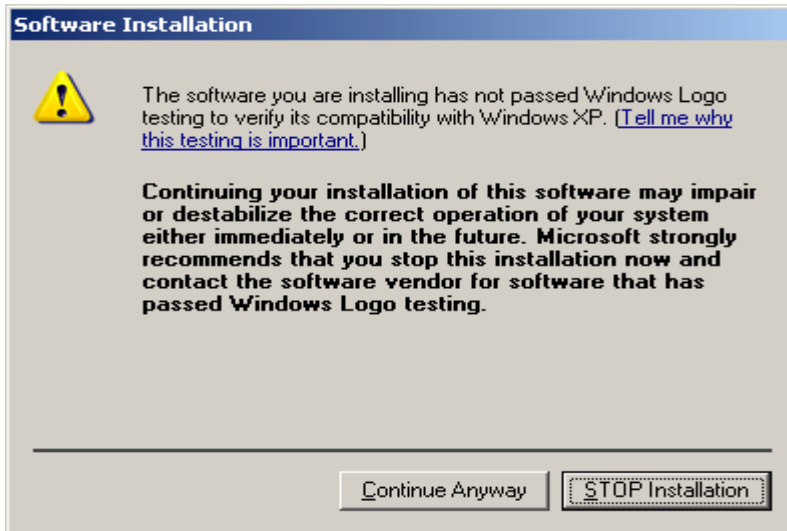
Download the MCS7840 driver from MosChip Website, www.moschip.com . The driver disk consists of **MSSetup.exe**, **MSUninst.exe** and related folders for **Win XP/2K** and **Win 98/ME** operating systems.



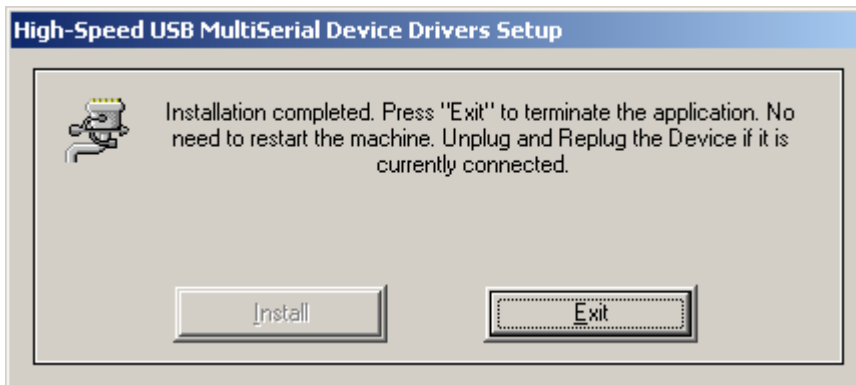
Use “**MSSetup.exe**” utility to install the driver. Double click on the utility to start the installation process. Press “**Install**” button to install the drivers for High-Speed USB Multi serial Device.



During the installation process, a warning message will popup informing the user that the software being used has not passed the Windows Logo testing. You can ignore the warning message by clicking on the option “**Continue Anyway**”.



The utility will display a message stating “Installation completed”. Use “**Exit**” button to complete the driver installation.

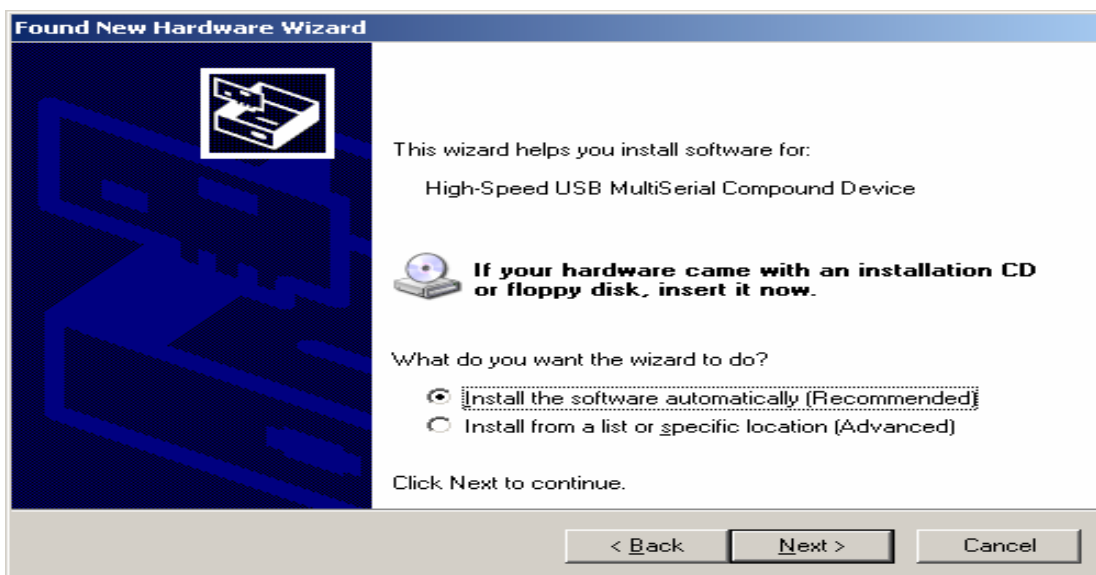


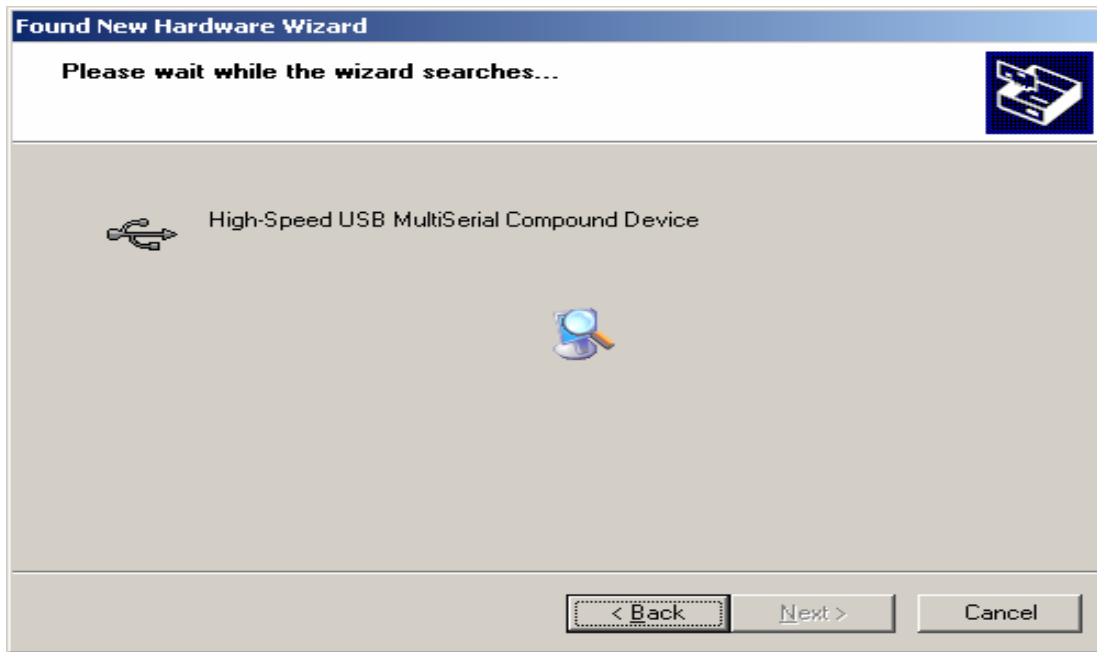
2. MCS7840 Device detection

Connect MCS7840 to the USB Host controller of the PC using a USB cable. The first time you plug the adapter into the USB port, Windows will bring up the "**Found New Hardware Wizard**" window to guide you through the initial configuration process. Select the option "**No, not this time**" and click on "**Next**" button to continue.



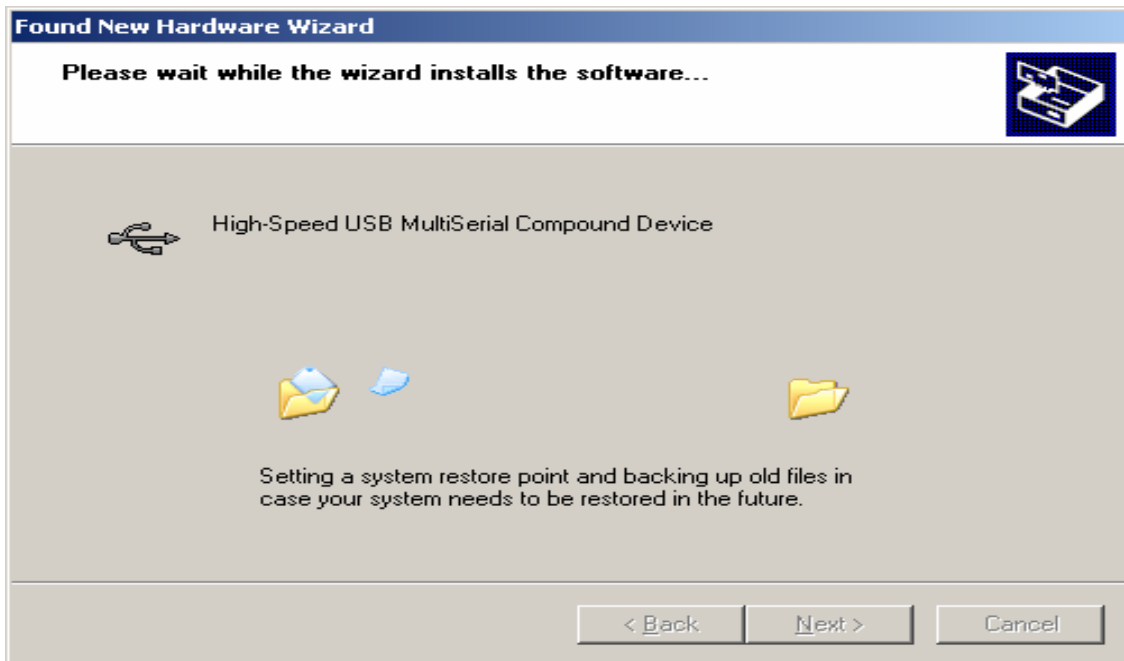
The following wizard helps you install the software for "High-Speed USB Multi Serial Compound device". Select the option "**Install the software automatically**" and click on "**Next**" to proceed further.





As specified in earlier section, a warning message will popup informing the user that the software being used has not passed the Windows Logo testing. You can ignore the warning message by clicking on the option “**Continue Anyway**”.





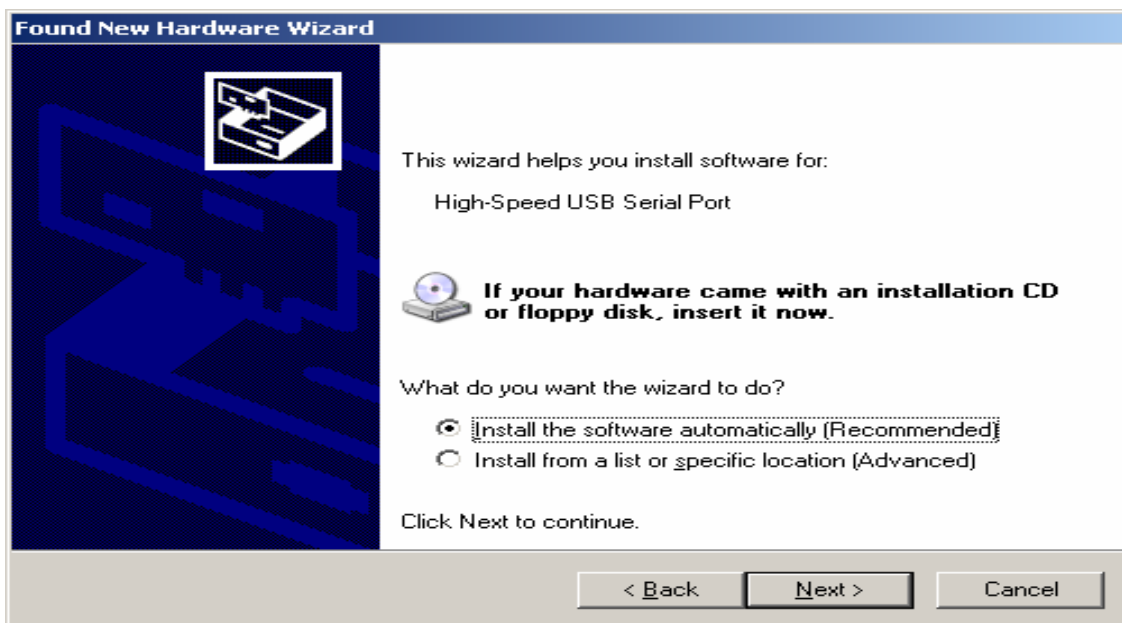
The following window conveys that the OS had finished installing the software for “High-Speed USB Multi Serial Compound Device”. Click on “**Finish**” to complete found new hardware wizard.

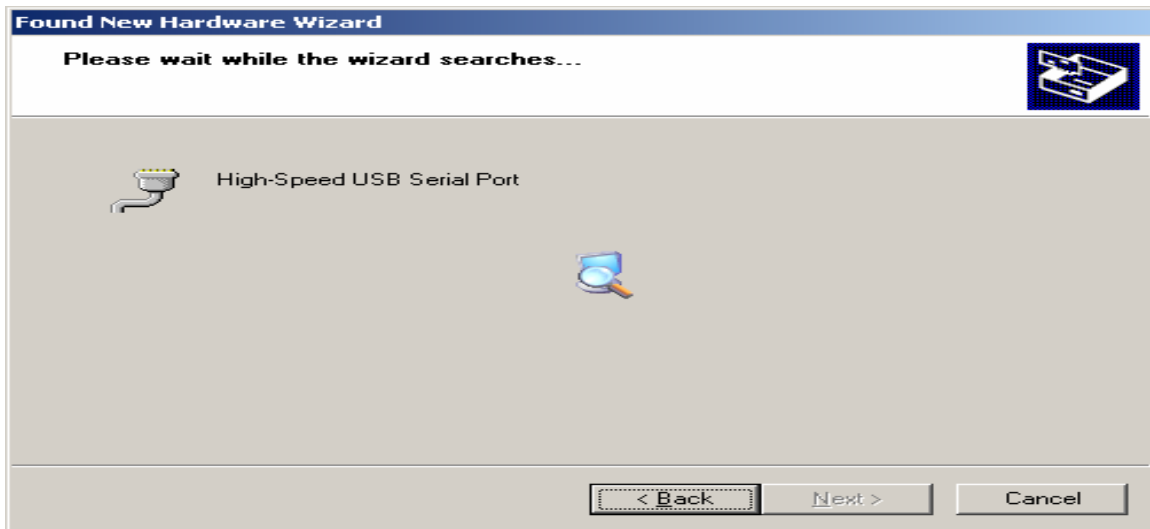


Follow the same steps as explained for “High-Speed USB Multi Serial Compound Device” to **each of the four serial ports.**

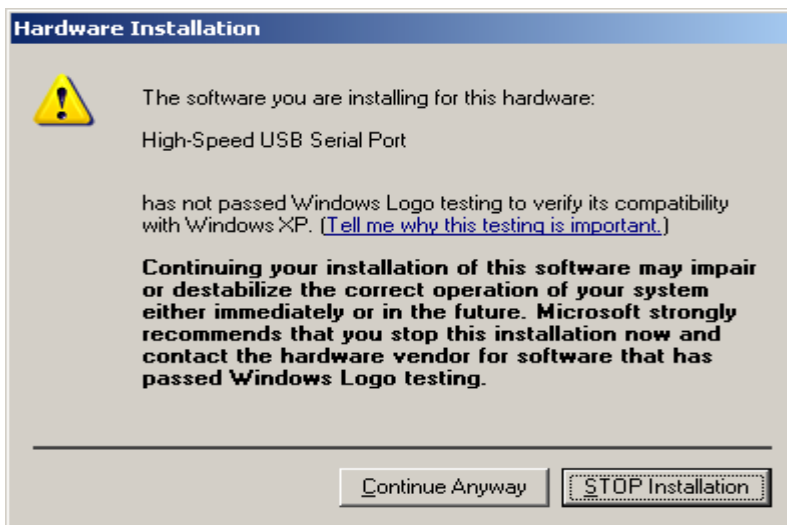


Select the option “**Install the software automatically**”





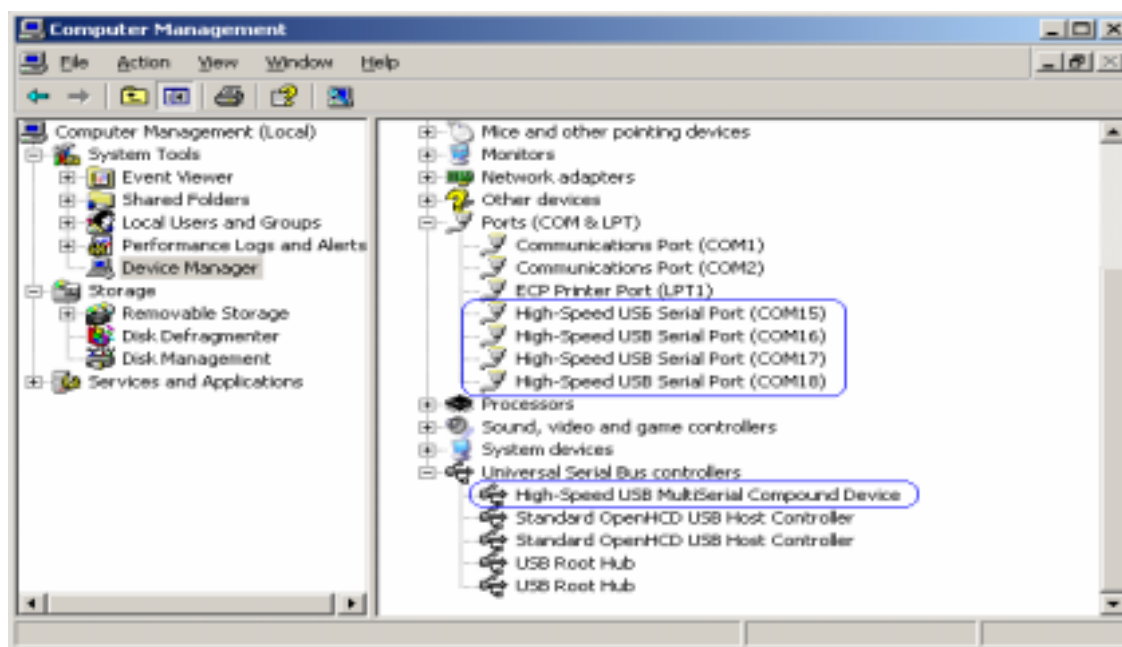
“Continue Anyway”.....



The following wizard indicates that the OS has completed installing the software for the first serial port. Continue the same process for installing the rest of the serial ports.



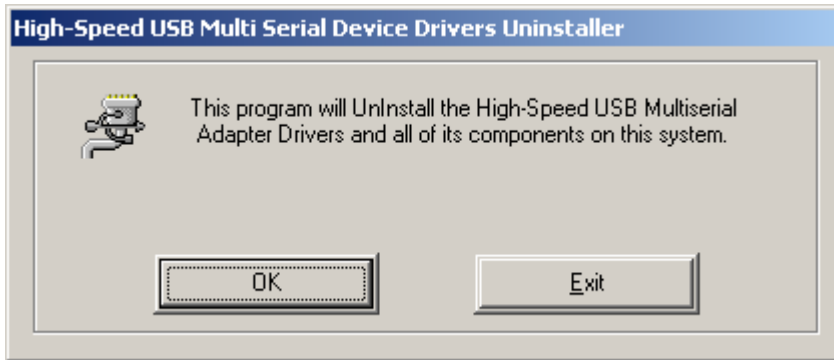
MCS7840 device detection can be confirmed by checking the Device manager. Check for “**High-Speed USB Multi Serial Compound Device**” under Universal Serial Bus Controllers and “**High-Speed USB Serial Port (Com X)**” under the category Ports (COM & LPT)



Now the MCS7840 Device is ready to use.

3. MCS7840 Device Uninstallation

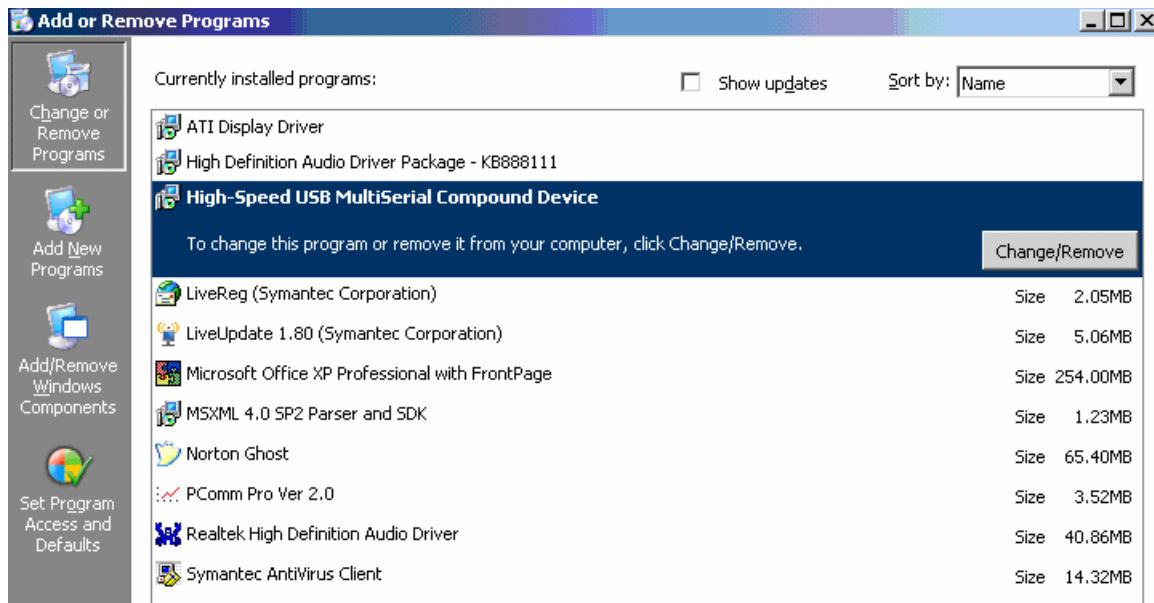
Use “**MSUninst.exe**” to uninstall the MCS7840 device driver from your PC. Double click on the utility to run the Uninstaller. Click on **OK** to proceed further.



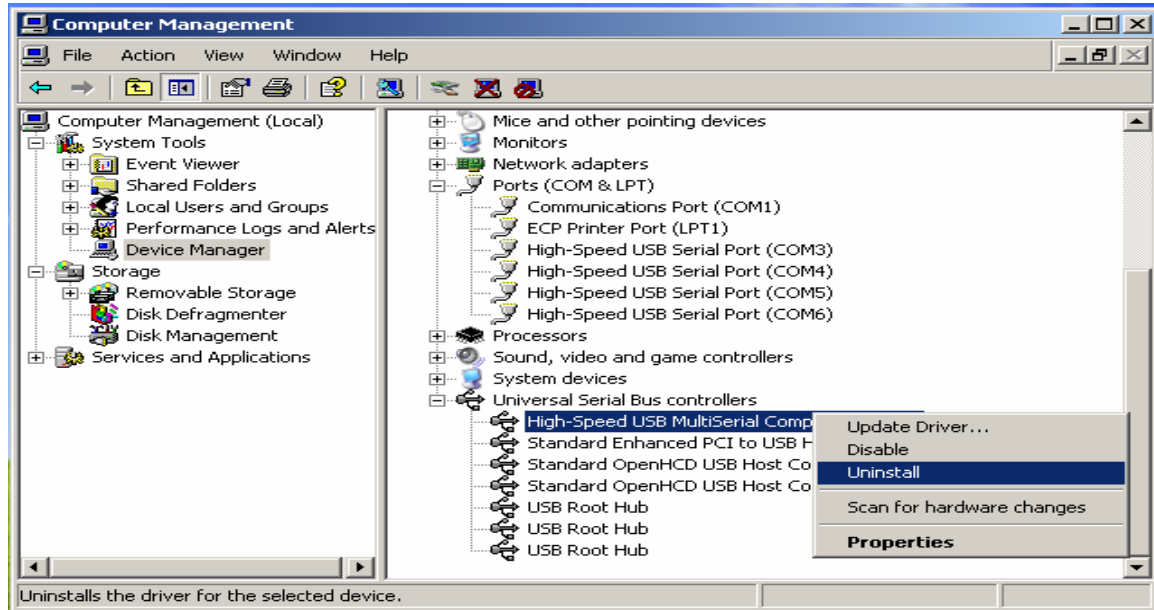
Use the “**Exit**” button to complete the Uninstaller utility. No need to restart the PC, unless prompted by the OS.



The driver can also be uninstalled from **Control panel – Add / Remove Programs**. Select the “High-Speed Multi Serial Compound Device” from the Add / Remove panel and click on “**Remove**” option. This will remove the MCS7840 device driver from the PC.



The MCS7840 device driver can be un-loaded through “**Device Manager**” as well. Go to Device Manager, Select High-Speed USB Multi Serial Compound Device from the Universal serial Bus controllers, Right Click on it, Select “**Uninstall**” as shown below.



The OS will prompt the user whether to uninstall the device from the system. Click on “OK” to uninstall or “Cancel” to terminate the un-installation.



4. Installation / Detection / Un-Installation of MCS7840 on Win 2000 OS

The Installation, Detection and Un-Installation procedures explained for Win XP OS holds good for Win 2000 OS as well. The only difference being, there is no need of user intervention during the detection of MCS7840. When you connect MCS7840 to the USB, Win 2000 OS will automatically detect the device without interference of the user.

5. About MCS7820

MCS7820 offers USB2.0 to two Serial Ports, installation process of MCS7820 would be similar to that of MCS7840. In case of MCS7820, user can see two High speed USB based Serial ports.

Thank you for using the user manual of MCS7840 – High Speed USB to Four Serial Compound Device.

6. Technical Support

Queries, Technical questions if any can be sent to techsupport@moschip.com or support@moschip.com .

7. Revision history

Version	Initiated by	Change details	Date
1.0	George Sridhar	Initial release	25 th July 2006