

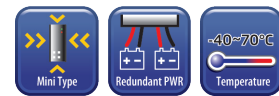
IMC-121FB Series



➤ **Industrial mini type Ethernet to fiber media converter with 2x10/100Base-T(X) and 1x100Base-FX**

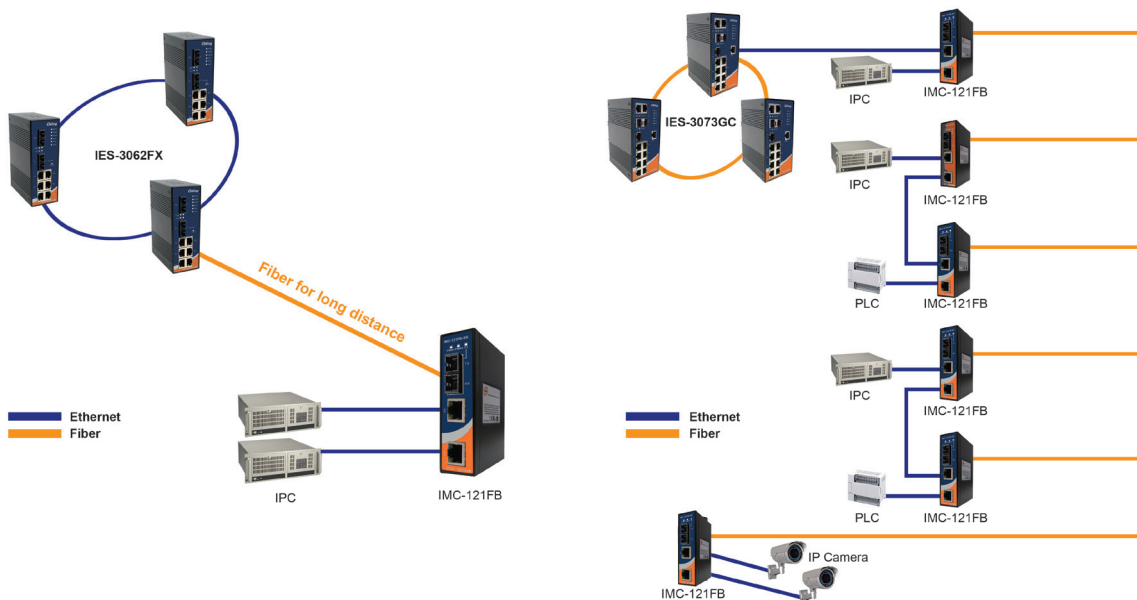
Features

- Support 2 ports 10/100Base-T(X) auto-negotiation and auto-MDI/MDI-X
- 2x10/100 Base-T(X) ports to save the usage of copper ports
- High reliability and rigid IP-30 housing
- DIN-Rail and wall mounting enabled



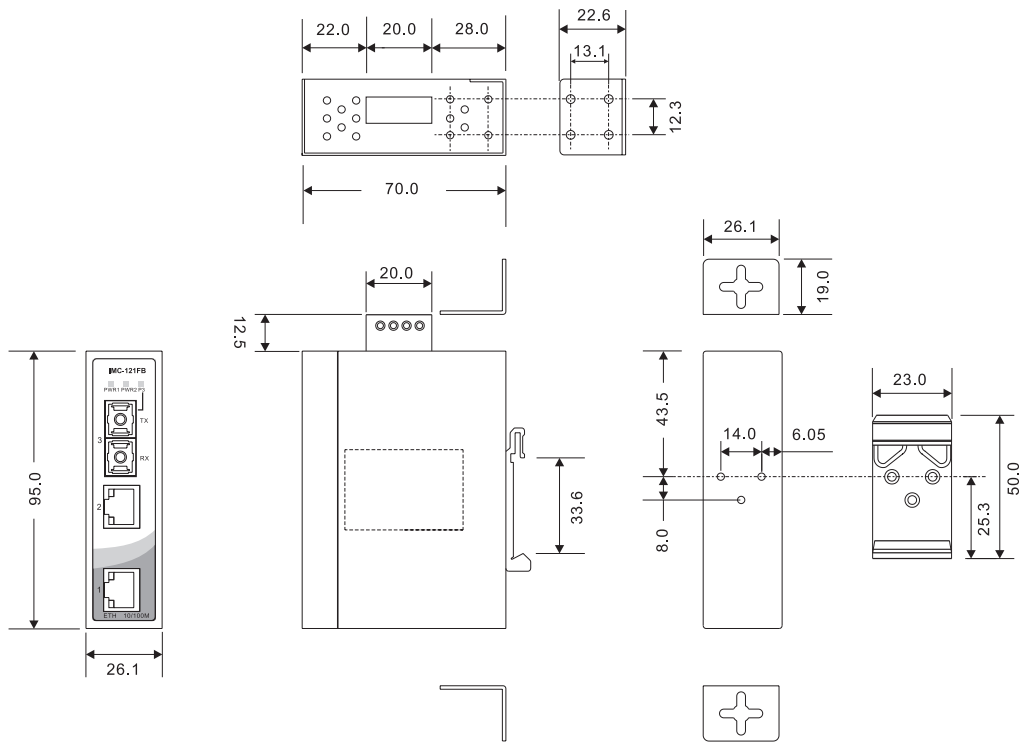
Introduction

IMC-121FB series are industrial media converters providing media conversion between 10/100Base-T(X) and 100Base-FX. IMC-121FB series feature rigid IP-30 housing design and support wide operating temperature range from -40 to 70 °C. Therefore, IMC-121FB series are reliable media converter and can satisfy most demands of operating environments.



Connections of Ethernet Media Converter

Dimensions



(Unit=mm)

Specifications

ORing Media Converter Model		IMC-121FB-MM-SC	IMC-121FB-SS-SC
Physical Ports			
10/100Base-T(X) Ports in RJ45 Auto MDI/MDIX		2	2
100Base-FX fiber Port			
Fiber Ports Specifications	Fiber Ports Number	1	1
	Fiber Ports Standard	100Base - FX	100Base - FX
	Fiber Mode	Multi-mode	Single-mode
	Fiber Diameter (µm)	62.5/125 µm 50/125 µm	9/125 µm
	Fiber Optical Connector	SC	SC
	Typical Distance (km)	2 km	30 km
	Wavelength (nm)	1310 nm	1310 nm
	Max. Output Optical Power (dBm)	-14 dBm	-8 dBm
	Min. Output Optical Power (dBm)	-23.5 dBm	-15 dBm
	Max. Input Optical Power (Saturation)	0 dBm	0 dBm
	Min. Input Optical Power (Sensitivity)	-31 dBm	-34 dBm
	Link Budget (dB)	7.5 dB	19 dB
Technology			
Ethernet Standards		IEEE 802.3 for 10Base-T IEEE 802.3u for 100Base-TX and 100Base-FX	

LED Indicators	
Power Indicator	Green : Power LED x 2
10/100Base-T(X) RJ45 Port Indicator	Green for port Link/Act. Amber for Duplex/Collision
100Base-FX Fiber Port Indicator	Green for fiber port Link/Act
Power	
Input Power	Dual 12~48 VDC power input at 4-pin terminal block
Power Consumption (Typ.)	4.5 Watts
Overload Current Protection	Present
Reverse Polarity Protection	Present
Physical Characteristics	
Enclosure	IP-30
Dimensions (W x D x H)	26.1 (W) x 70 (D) x 95 (H)mm (1.03 x 2.76 x 3.74 inch)
Weight (g)	210 g
Environmental	
Storage Temperature	-40 to 85°C (-40 to 185°F)
Operating Temperature	-40 to 70°C (-40 to 158°F)
Operating Humidity	5% to 95% Non-condensing
Regulatory Approvals	
EMI	FCC Part 15, CISPR (EN55022) class A
EMS	EN61000-4-2 (ESD), EN61000-4-3 (RS), EN61000-4-4 (EFT), EN61000-4-5 (Surge), EN61000-4-6 (CS), EN61000-4-8, EN61000-4-11
Shock	IEC60068-2-27
Free Fall	IEC60068-2-32
Vibration	IEC60068-2-6
Safety	EN60950-1
MTBF (Hours) (MIL-HDBK-217F2, GB, GC, 25°C)	1,023,458
Warranty	5 years

Ordering Information

IMC-1 **A** **B** **C** **B** - **DD** - **EE**

Code Definition	10/100Base-T(X) Port Number	Fiber Port Number	Fiber Port Type	Fiber Optical Mode	Fiber Optical Connector
Option	- 2 : 2 port	- 1 : 1 port	- F : 100Base-FX	- MM : Multi-mode - SS : Single-mode	- SC : SC Connector

	Model Name	Description
Available Model	IMC-121FB-MM-SC	Industrial mini type Ethernet to fiber media converter with 2x10/100Base-T(X) and 1x100Base-FX, multi-mode, 2km/1310nm, SC connector
	IMC-121FB-SS-SC	Industrial min type Ethernet to fiber media converter with 2x10/100Base-T(X) and 1x100Base-FX, single-mode, 30km/1310nm, SC connector

Packing List

- IMC-121FB
- DIN-Rail Kit
- Wall-Mount Kit
- Quick Installation Guide

Optional Accessories (Can be purchased separately)

- DR-45 series, 45W DIN-Rail power supply
- DR-75 series, 75W DIN-Rail power supply
- DR-120 series, 120W DIN-Rail power supply
- SDR-240-48, 240W DIN-Rail power supply
- SDR-480-48, 480W DIN-Rail power supply
- FPC series : Fiber Patch cord