

# Open-Vision v3.0

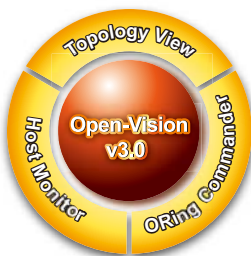
## ► Powerful Network Management Windows Utility Suite

### Features

- Device configuration scan
- IP setting group wizard, firmware upgrade group wizard, and redundant ring (O-Ring) setting wizard
- Status Monitoring and Alarm
- Network analysis function
- Draw the whole network topology automatically and path management available
- Devices can be grouped and managed by different IP ranges
- ORing MAP technology can show network device locations on Google MAP
- The health status of connections are automatically checked
- IP scan for detection of all of the ORing switches in the local network
- No limitation on the number of devices to be monitored



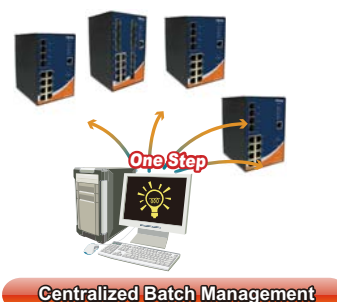
### Introduction



A powerful management utility is important for administrators to monitor and manage all devices in a local network. ORing is proud to announce Open-Vision v3.0, which is a powerful network management utility suite including four different features that can meet various demands from network monitor and managements in a wide range of industrial applications. For the four basic functions – Centralized management / Visualized management / Complete monitor / Early system, Open-Vision v3.0 provides intelligent advantages which surpass the prior one in different aspects. Only through the advanced monitoring features and various warning systems, the users can be informed of any accidental situations in the local network and recover the network immediately. Hence, the stability and reliability of the local network can be assured.

### Centralized Management

Open-Vision v3.0 helps the administrator in configuring all ORing's Ethernet switches at once within a few steps by powerful application wizards in ORing Commander: IP Setting Wizard, Firmware Upgrade Wizard, and Redundant Ring (O-Ring) Group Wizard (in ORing Commander). The administrators do not need to configure the managed switches one by one anymore.



## Visualized Management

ORing's Topology View can show up the complex topologies of all of ORing's Ethernet switches in the local network. Further, different switches can be grouped by different IPs and to be shown in different topology windows. Thus, administrators need not to monitor all of the switches in the local network at once, which makes the job of monitoring easier and more efficient. On the other hand, the health status of the connections will be shown on by different colors. ORing topology view helps the administrators to do the management visualizely, intuitively, and more efficiently.

## Complete Monitor

ORing-Vision v3.0 has various mechanisms to monitor the statuses of ORing's switches, including event log, and SNMP traps. The administrators will be informed the occurrences of any abnormal events by email, and the list of event log can be exported as an excel file. Moreover, the configurations of all ORing's switches can be saved and the status of configurations of all switches in local network can be scanned regularly to detect any changes of the configurations. Hence, administrators can know any unexpected changes of the configurations of switches. On the other hand, ORing Host monitor can automatically ping and check the health statuses of connections among all IP-based devices in local area network. Host Monitor also features IP categorized function, and all of IP-based devices can be grouped by the different IPs and to be monitored.

## Early Warning

Based on the various monitor mechanisms, if any failure is occurred in the network, administrators can be informed at a very early stage.

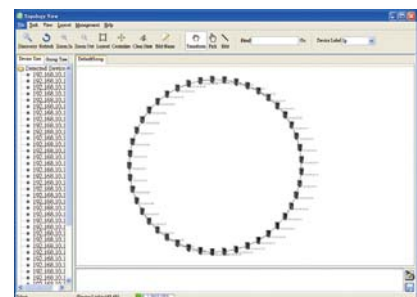
## System Requirements

Software Requirements	
Operating System	Windows 2000/2003/XP/Vista/Win7
Browser	IE 6.0 Service Pack 1 or higher version
Hardware Requirement	
CPU	Intel Core 2 Duo 2.4 GHz or above
RAM	1G or above
Hard Disk Space	1G or above

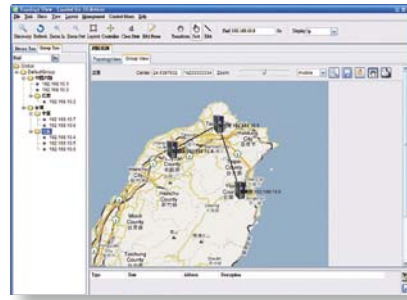
## Specifications

### ORing Topology View

- The topology views show the topology of connections among all of the switches in the local network.
- IP categorized function
- Configure the switches into different IP domains, and there is no limitation of the nodes to be configured by ORing Topology View.
- Visualized warning system of the health statuses of the connections among the switches
- Traffic flow analysis of each node
- Event log that can be exported as an Excel file.
- The administrator can plan the future topology manually in "Edit" operation mode.

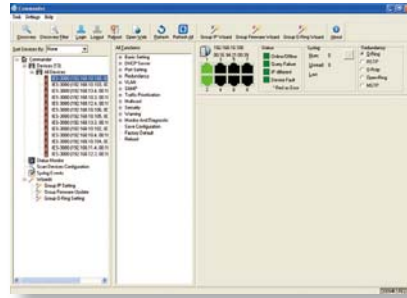


- **ORing MAP** : Displays topology of connections on Google Map
  - Automatic device discovery
  - Device status monitoring
  - Syslog events
  - Scan device configuration



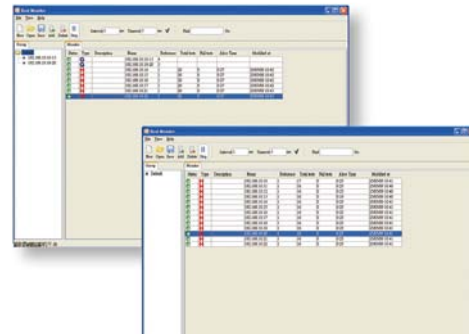
### ORing Commander

- Automatic device discovery
- Device status monitoring
- Syslog events
- Scan device configuration
- IP setting Group Wizard, Firmware Upgrade Group Wizard, and Redundant Ring (O-Ring) Group Wizard



### ORing Host Monitor

- IP scan to detect all of the IP-based devices in the local network.
- To check the health statuses of connections of all IP-based devices
- All of IP-based devices can be grouped and managed by different IP ranges.



## Ordering Information

Available Model	Model Name	Description
	Open-Vision M500	Powerful Network Management Windows Utility Suite, 500 IP devices
<b>Packing List</b>		
<ul style="list-style-type: none"> <li>• Open-Vision CD</li> <li>• USB Key-pro License</li> </ul>		