

Aport-211S

Serial-to-Ethernet Gateway with eight digital I/Os

- ✓ Connect RS-232/422/485 devices to TCP/IP network
- ✓ Eight programmable digital I/Os
- ✓ 10/100Mbps Ethernet; 38,400bps serial data rate
- ✓ Supports TCP/Server, TCP/Client and UDP mode
- ✓ Web/Telnet/Serial consoles for device configuration
- ✓ Windows utility for device configuration and management
- ✓ Firmware upgradeable



Introduction

The Aport-211S is an easy-to-use Serial-to-Ethernet gateway which is designed for applications requiring quick, reliable and seamless integration of existing RS-232/422/485 devices to an Ethernet network.

Serial-to-Ethernet Data Conversion

The Aport-211S provides a transparent data channel between serial device and the TCP/IP network, so that the serial device can be accessed by using standard TCP/IP protocols.

Versatile Operation Modes

The Aport-211S can behave as a TCP server, a TCP client or an UDP node on an Ethernet network to fulfill versatile application requirements.

Programmable Digital I/O

Besides, the Aport-211S also provides 6 TTL plus 2 CMOS digital I/Os. A pre-defined ASCII command set is provided for users to control these I/Os through LAN/WAN.



Specifications

Network Interface

- ▷ Type: 10/100BaseT, RJ-45 connector
- ▷ Protocols: TCP, UDP, HTTP, Telnet, IP, ICMP, ARP
- ▷ IP addressing: DHCP, Static IP

Operation Modes

- ▷ TCP/Server, TCP/Client and UDP mode

Serial Interface

- ▷ Type: RS-232/422/485, switch selectable
- ▷ Connector: DB9, male
- ▷ Signals: TxD, RxD, RTS, CTS, DTR, DSR, DCD, GND
- ▷ Baud: 1,200 to 38,400 bps
- ▷ Parity: None, Even, Odd
- ▷ Data bits: 7,8
- ▷ Stop bit: 1,2
- ▷ Flow control: None, RTS/CTS, XON/OFF

Programmable Digital I/Os

- ▷ PIO0-PIO5: TTL level compatible
- ▷ PIO6-PIO7: CMOS level compatible
- ▷ Connector: DB9, male

Configuration Methods

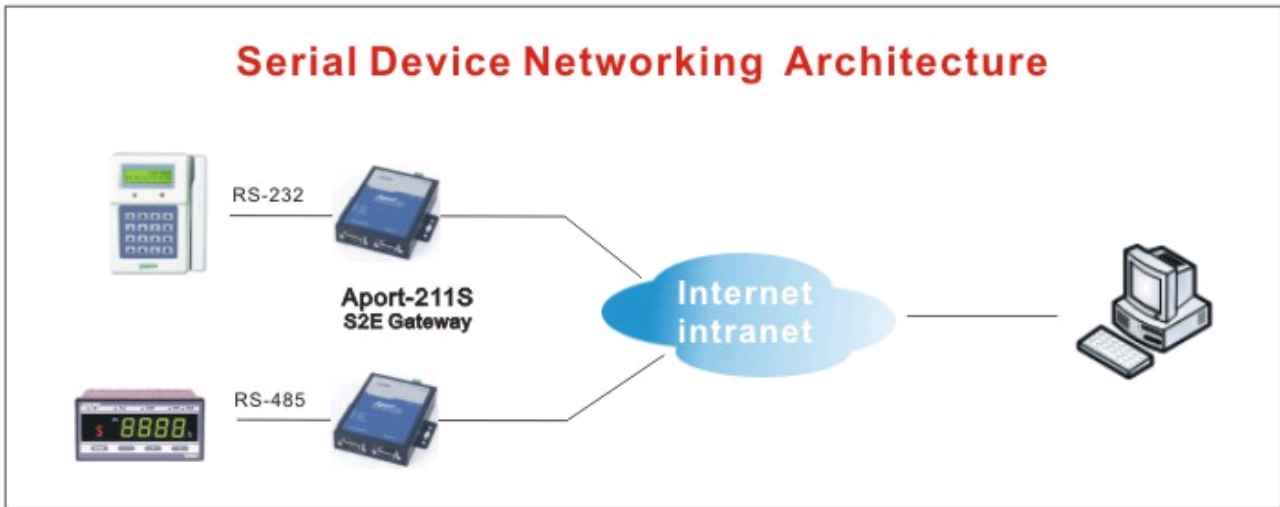
- ▷ Web console, Telnet Console and Serial Console
- ▷ Windows utility (included in CD)

General

- ▷ Power input: 9-40VDC
- ▷ Power consumption: 70mA@+12VDC
- ▷ Operation temp.: 0-70C, 5-95% RH
- ▷ Storage temp.: -20-85C, 5-95% RH
- ▷ WxHxD: 78x108x25 mm
- ▷ Weight: 300g
- ▷ Regulation: CE/FCC compliant
- ▷ Warranty: 2 years

Aport-211S

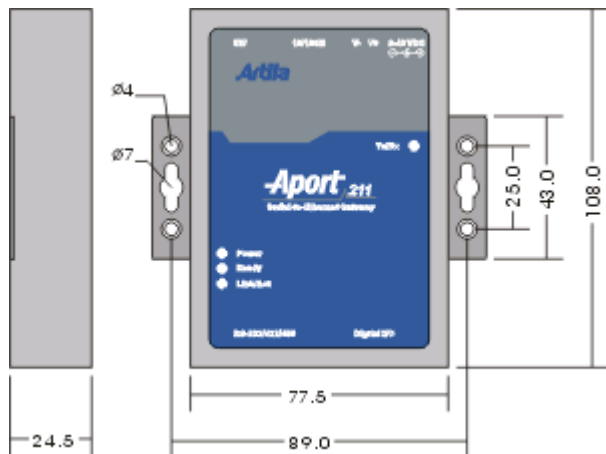
Serial-to-Ethernet Gateway with eight digital I/Os



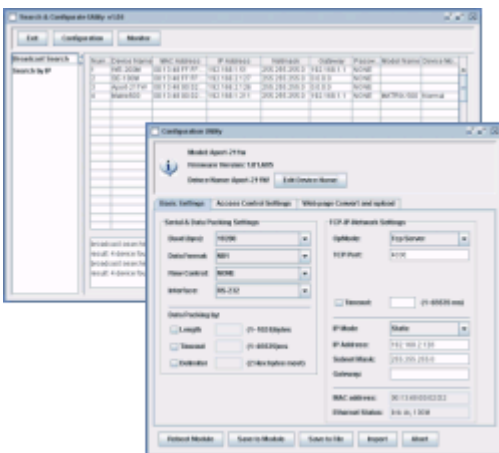
Pin Assignment

PIN	RS-232	RS-422	RS-485	PIN	GPIO
1	DCD	Tx-	---	1	PIO 0
2	Rx	Tx+	---	2	PIO 1
3	Tx	Rx+	Data+	3	PIO 2
4	DTR	Rx-	Data-	4	PIO 3
5	GND	GND	GND	5	PIO 4
6	DSR	---	---	6	PIO 5
7	RTS	---	---	7	PIO 6
8	CTS	---	---	8	PIO 7
9	RI	---	---	9	GND

Dimensions



Utility Screenshots



Ordering Information

☒ Aport-211S
Serial-to-Ethernet Gateway with eight digital I/Os