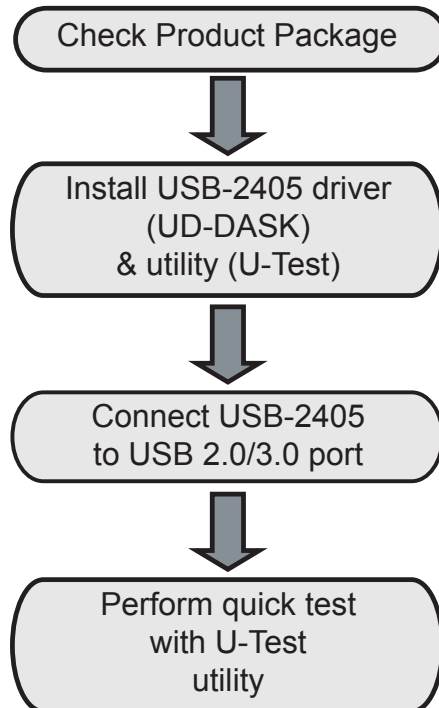


USB-2405

4-CH 24-Bit 128kS/s Dynamic Signal Acquisition USB 2.0 Module

Getting Started



Package Contents

Your package should contain:

- USB-2405
- Stand
- USB cable (2m)
- Rail mount kit
- ADLINK All-in-One CD
- Quick Start Guide (this document)

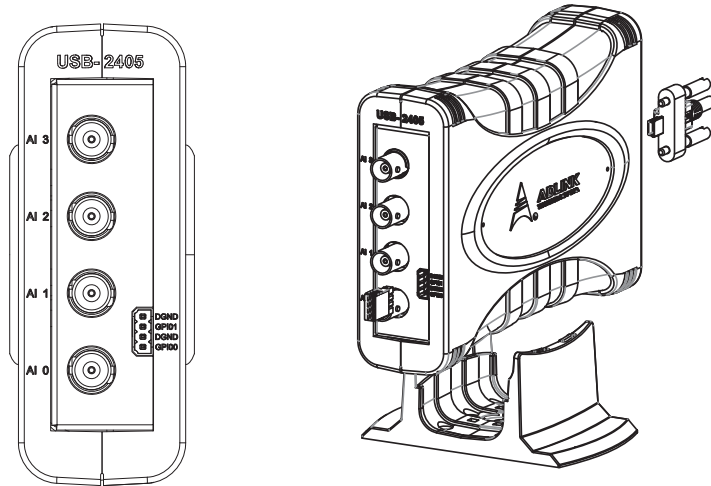
Features

- Hi-Speed USB 2.0
- USB bus powered
- 24-bit Sigma-Delta ADC with built-in anti-aliasing filter
- 4-CH simultaneous sampling analog input, up to 128kS/s
- AC or DC input coupling, software selectable
- Analog or digital triggering
- Supports 2mA excitation output on each analog input channel for IEPE sensor measurement
- Full auto-calibration
- Ready-to-use testing application (U-Test) provided

Installing the Driver

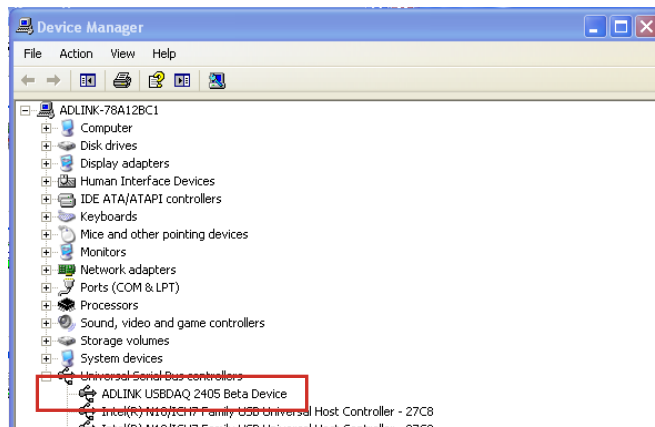
1. Download the latest UD-DASK driver & U-Test from: <http://www.adlinktech.com/> and run.
2. Follow the installation instructions

I/O, Mounting, & Connectivity



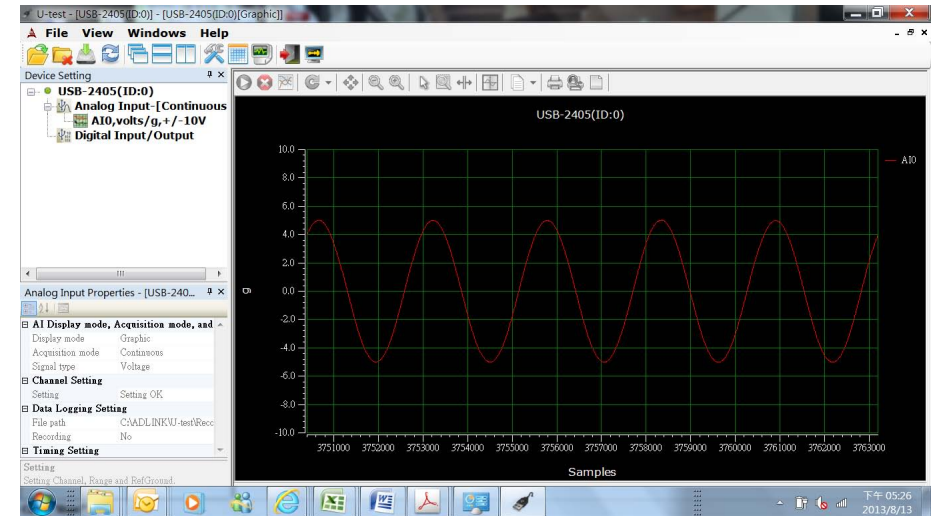
Connecting the USB-2405

1. Connect the USB-2405 module to one USB 2.0 or 3.0 port on the computer using the included USB cable
2. The first time the USB-2405 module is connected, a New Hardware message appears. It will take around 6 seconds to load the firmware. When complete, the LED indicator on the rear of the USB DAQ module changes from amber to green and the New Hardware message closes. The USB-2405 module can now be located in the hardware Device Manager, as shown.



Quick Testing with U-Test

1. Connect IEPE sensors (microphone or accelerometer) to the USB-2405
2. Launch the U-Test Utility from either the Start menu, or C:\ADLINK\U-test\U-Test.exe
3. Once the connected USB-2405 is detected automatically, configure the necessary channel settings and run to implement quick testing



Contact ADLINK

Web: <http://www.adlinktech.com>
 Service: service@adlinktech.com

Tel: +886-2-8226-5877
 Fax: +886-2-8226-5717

Copyright 2013 ADLINK Technology, Inc.
 Contents and specifications subject to change without notice.

ADLINK TECHNOLOGY INC.

*Advance Technologies
Automate the World*